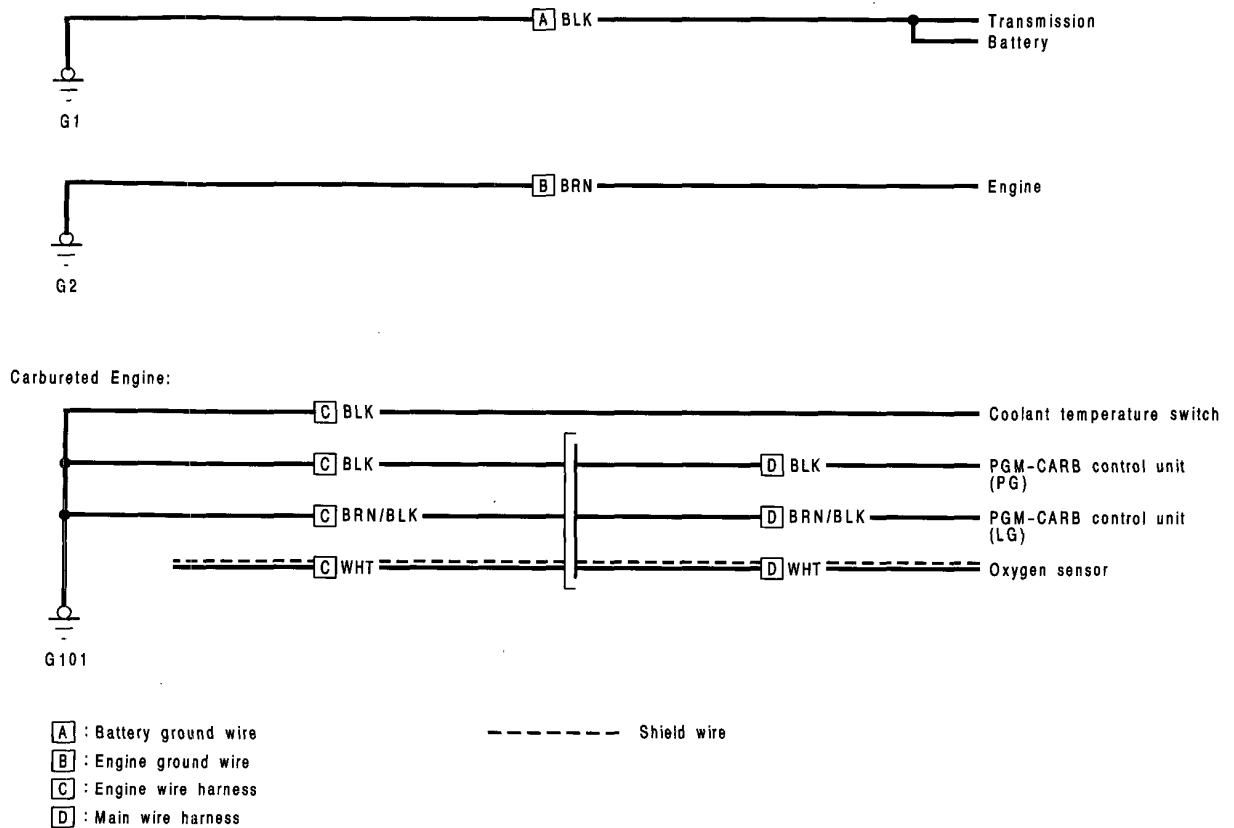


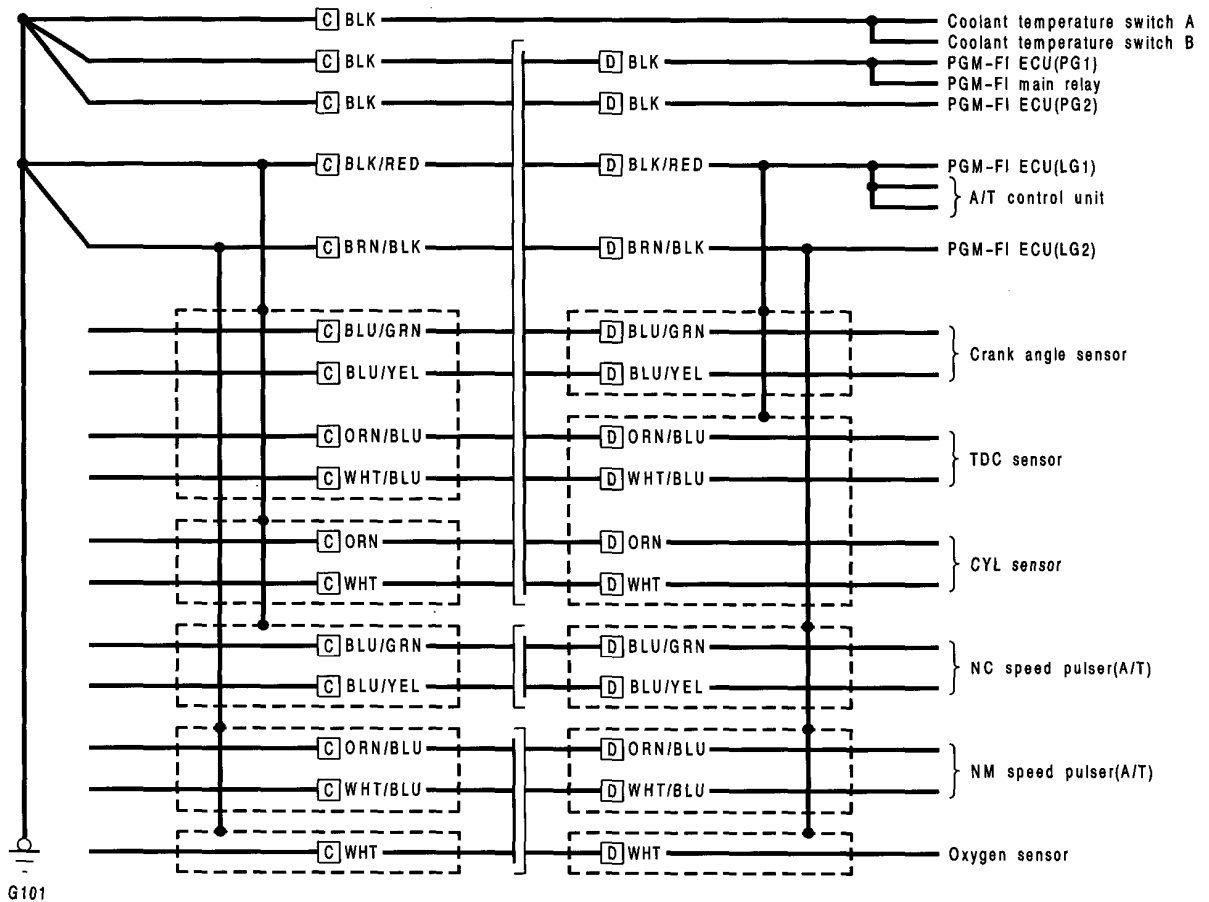
Ground Distribution

Circuit Identification





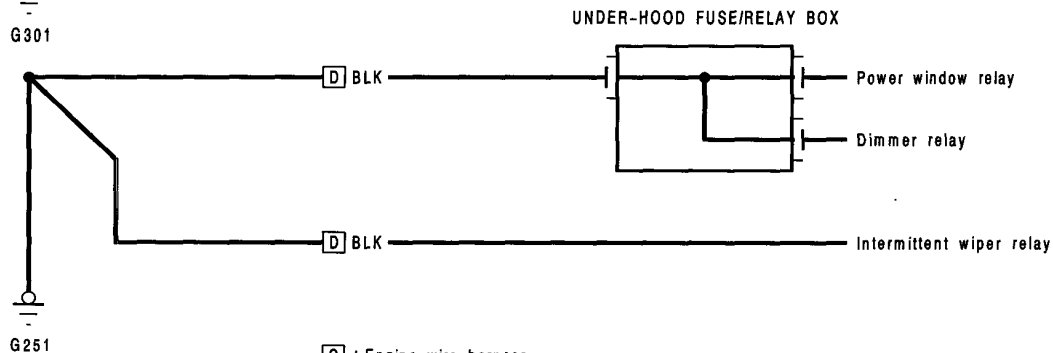
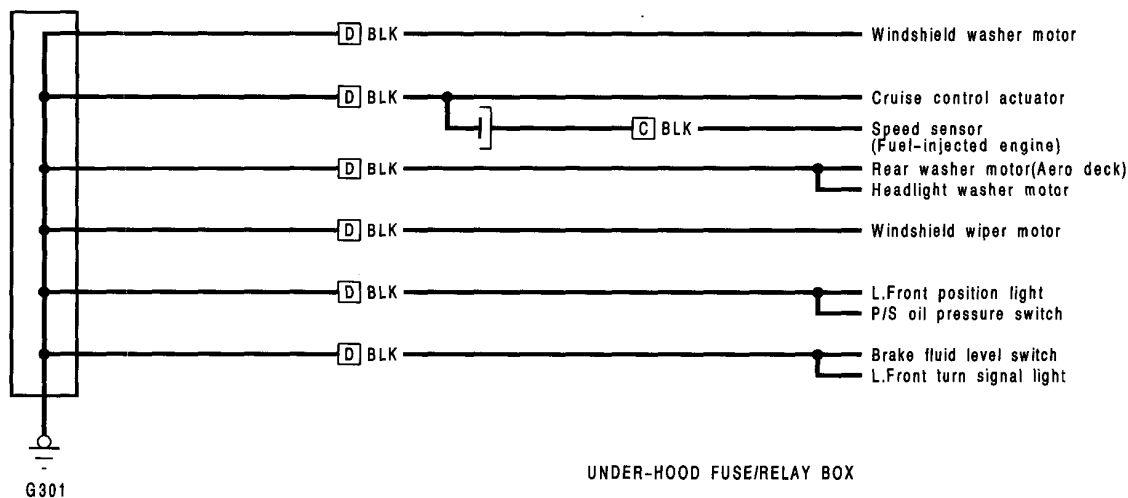
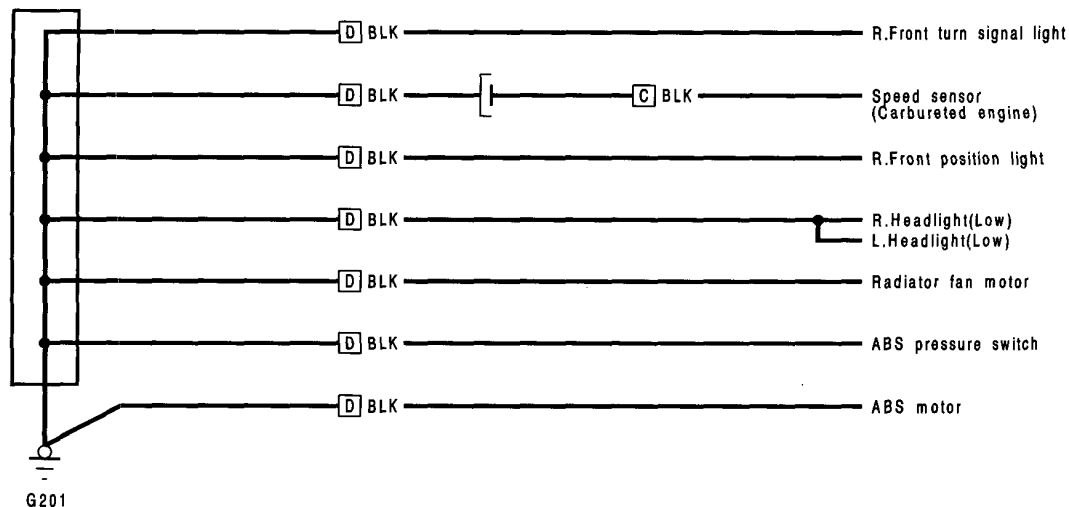
Fuel-Injected Engine:



Ground Distribution

Circuit Identification (LHD)

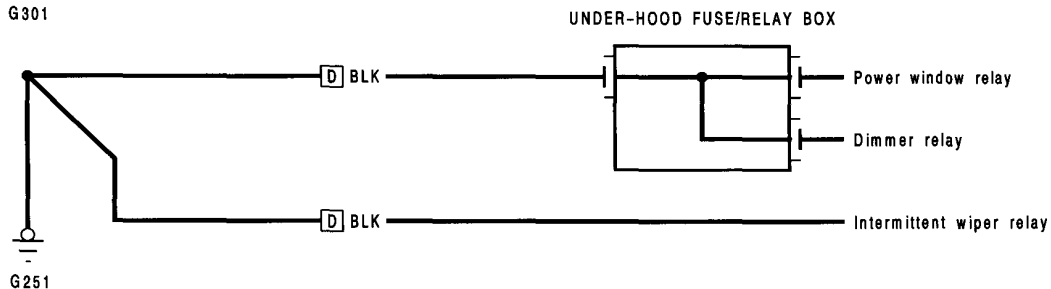
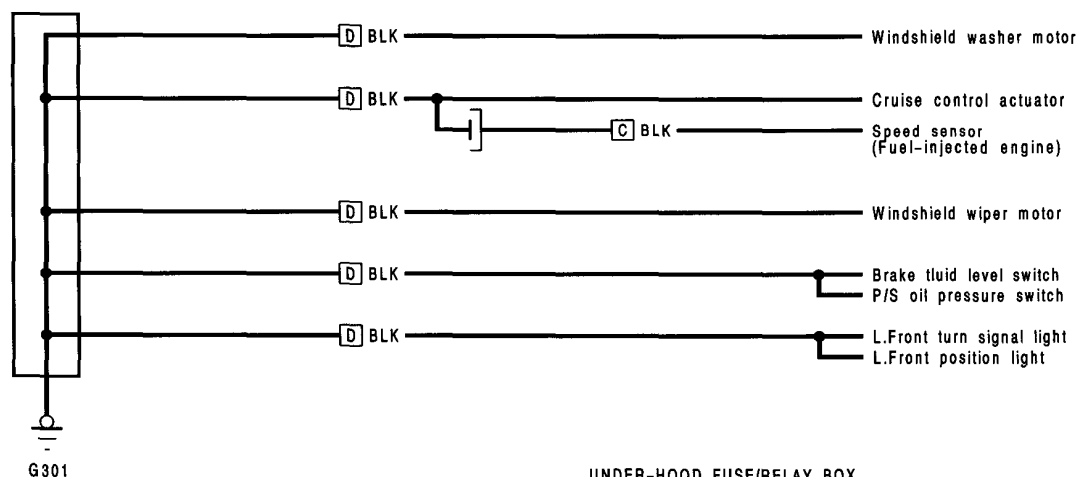
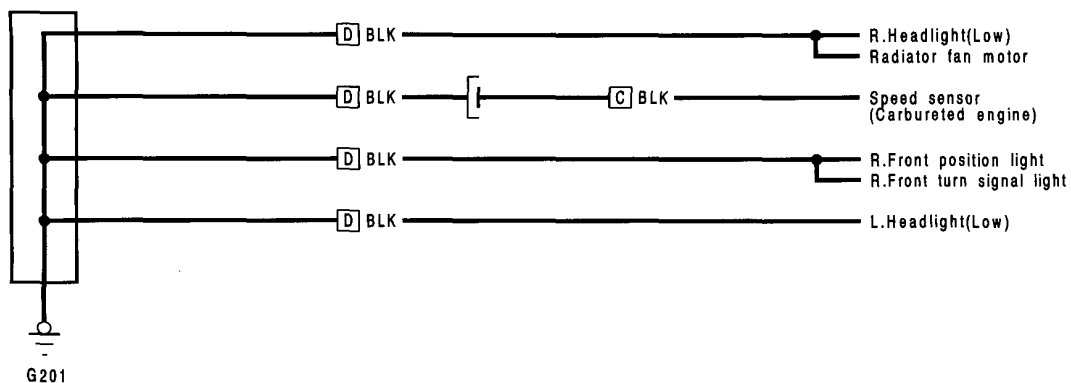
Europe model:



[C] : Engine wire harness
[D] : Main wire harness



Except europe model:

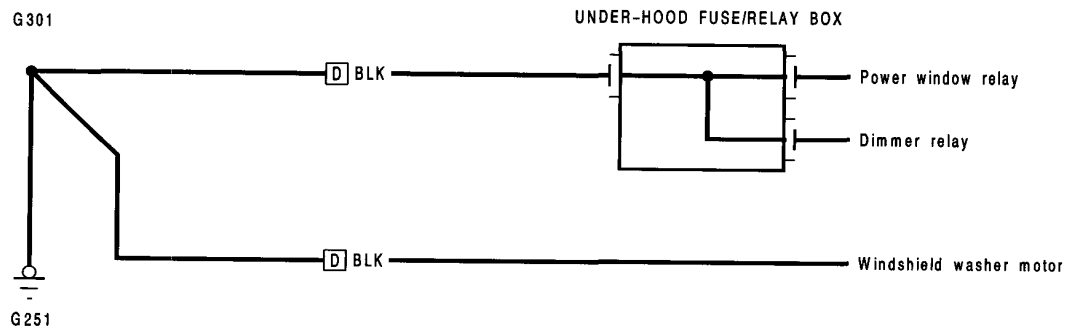
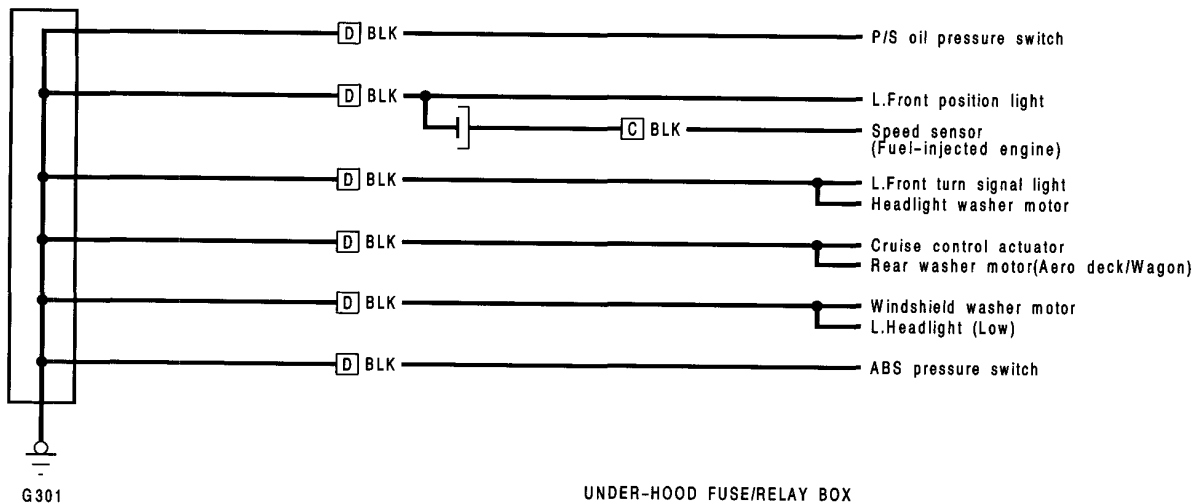
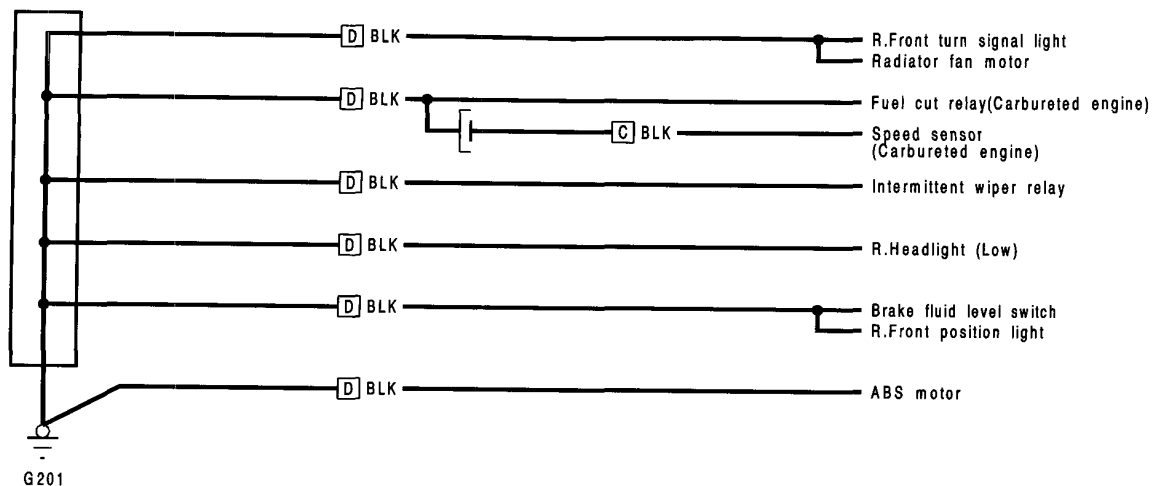


[C] : Engine wire harness
[D] : Main wire harness

(cont'd)

Ground Distribution

Circuit Identification (RHD) (cont'd)

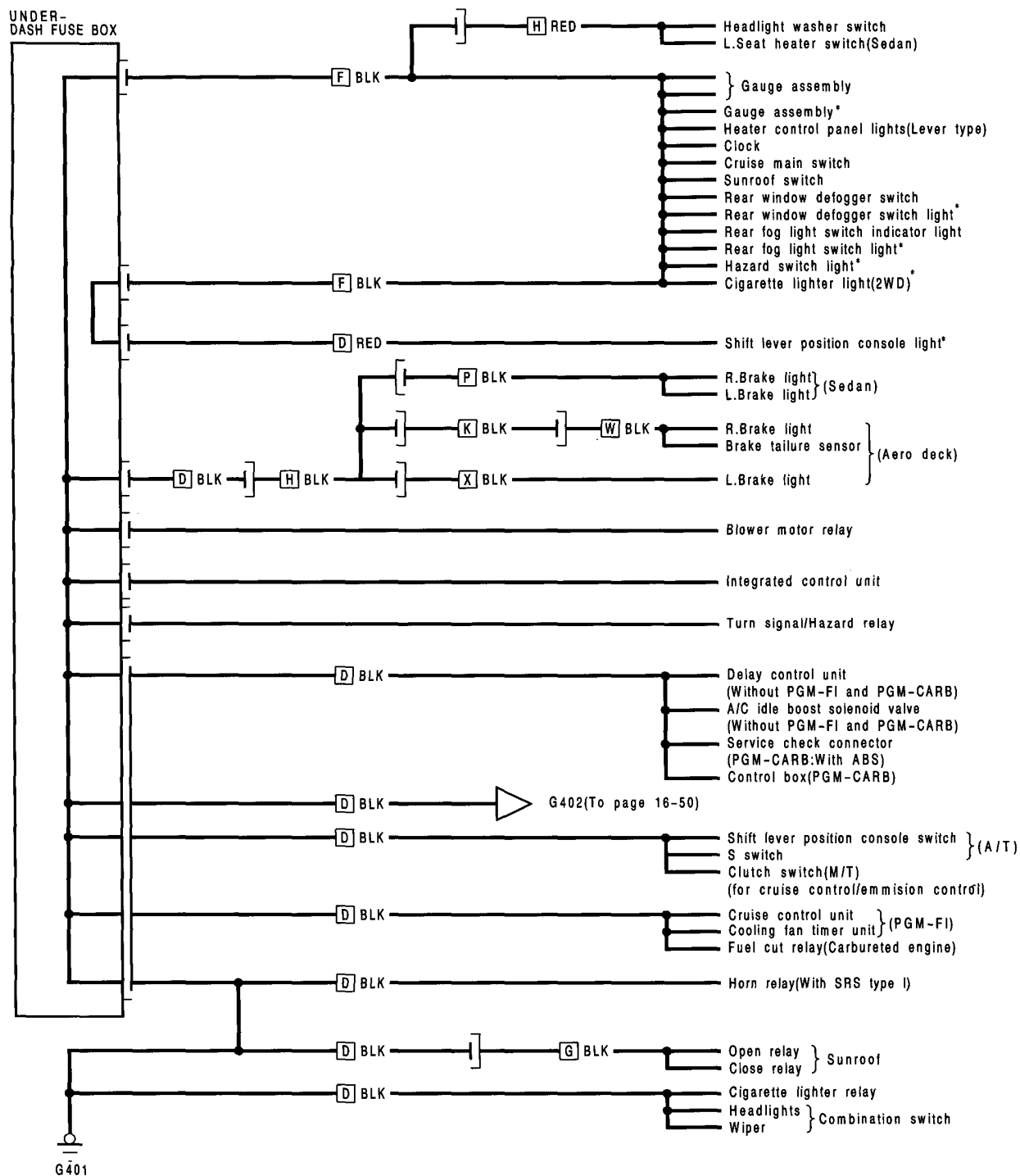


[C] : Engine wire harness
[D] : Main wire harness



(LHD)

Europe model:



*:Without dashlight brightness controller

[D] : Main wire harness
[F] : Dashboard wire harness
[G] : Sunroof wires

[H] : Floor wire harness
[K] : Side wire harness
[P] : Rear wire harness

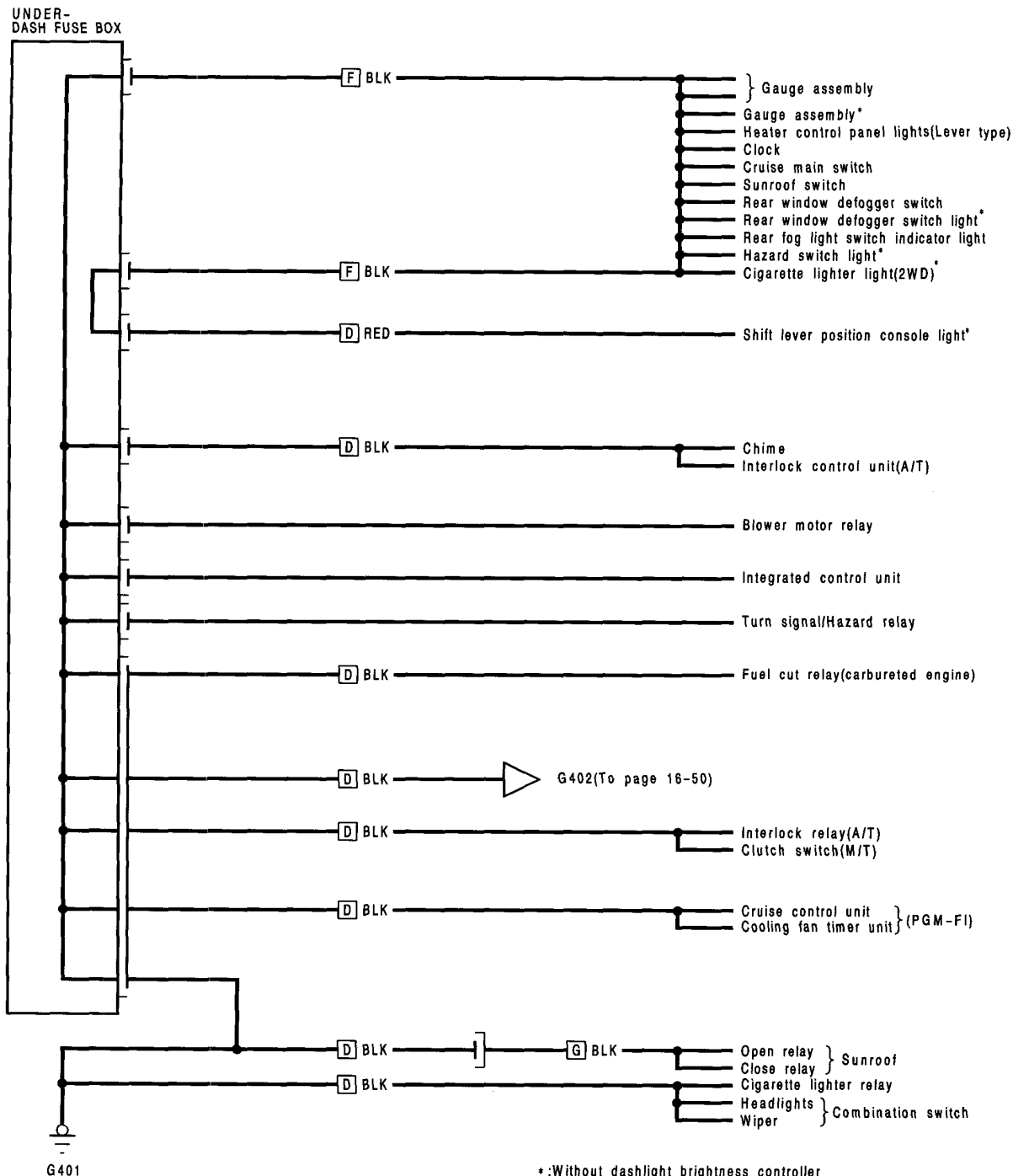
[W] : Right rear wire harness
[X] : Left rear wire harness

(cont'd)

Ground Distribution

Circuit Identification (LHD)

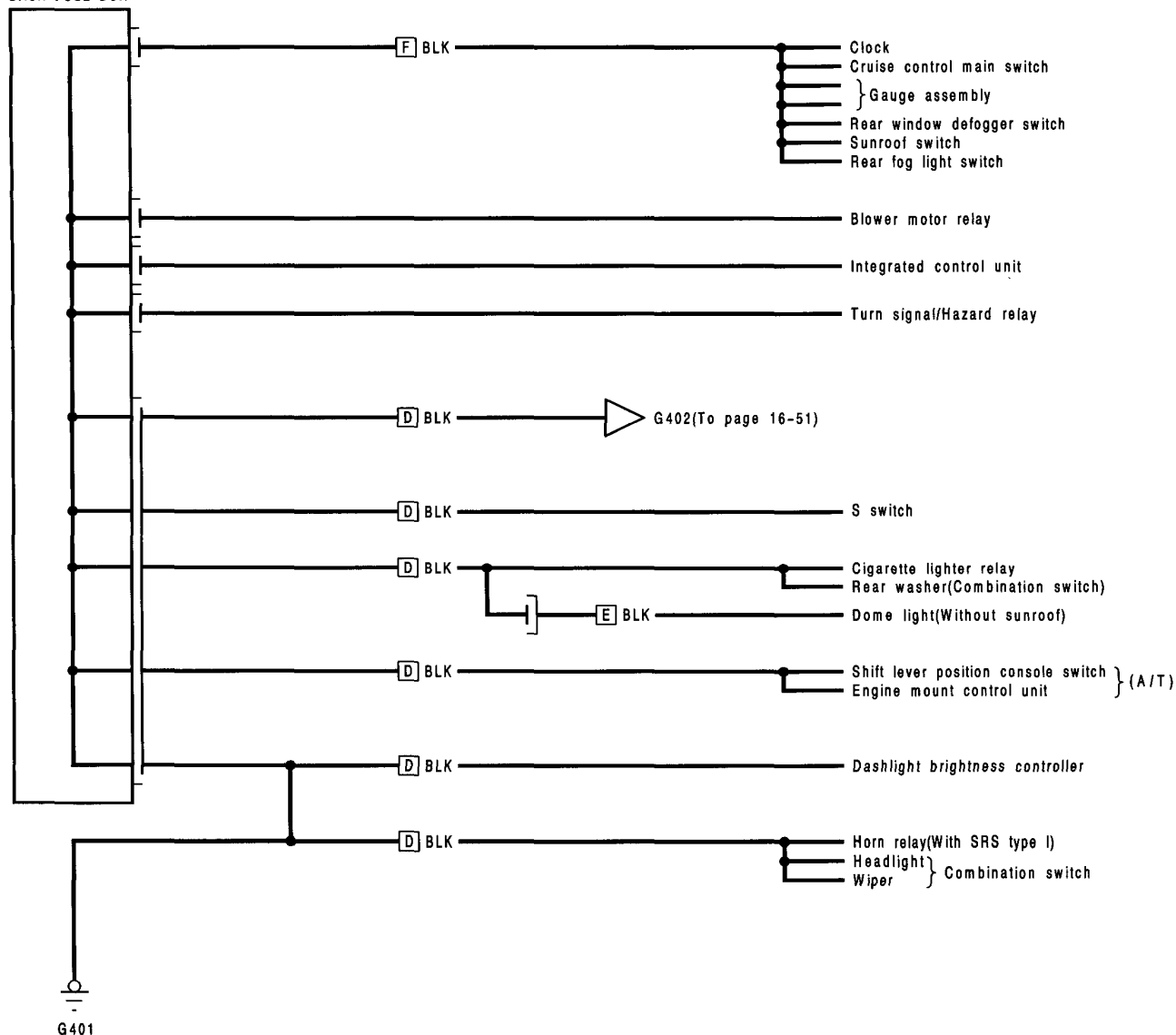
Excep europe model:



D : Main wire harness
F : Dashboard wire harness
G : Sunroof wires



UNDER-DASH FUSE BOX

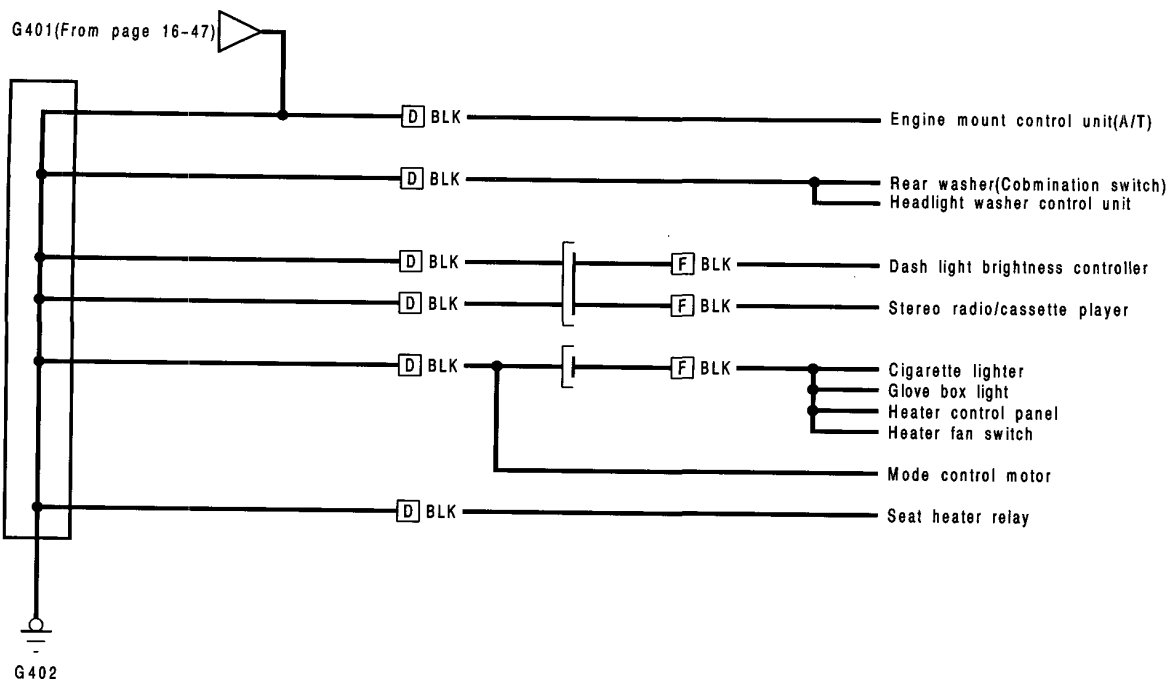


- [D] : Main wire harness
- [F] : Dashboard wire harness
- [E] : Roof wires

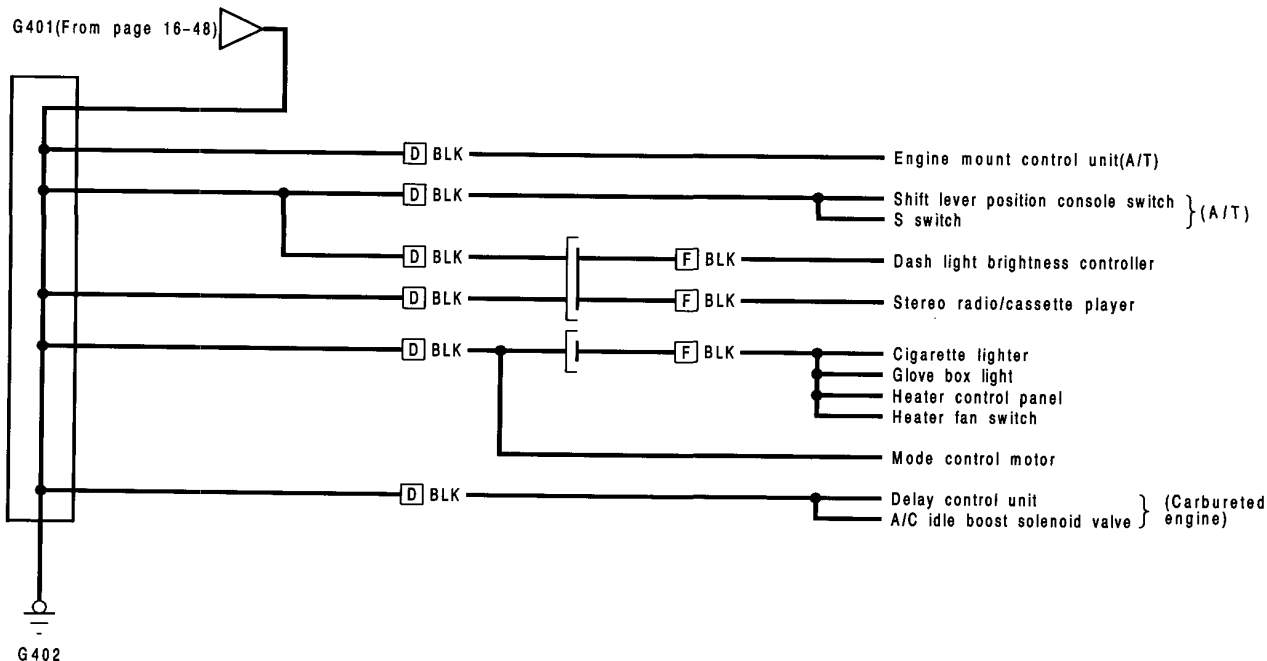
Ground Distribution

Circuit Identification (LHD)

Europe model:



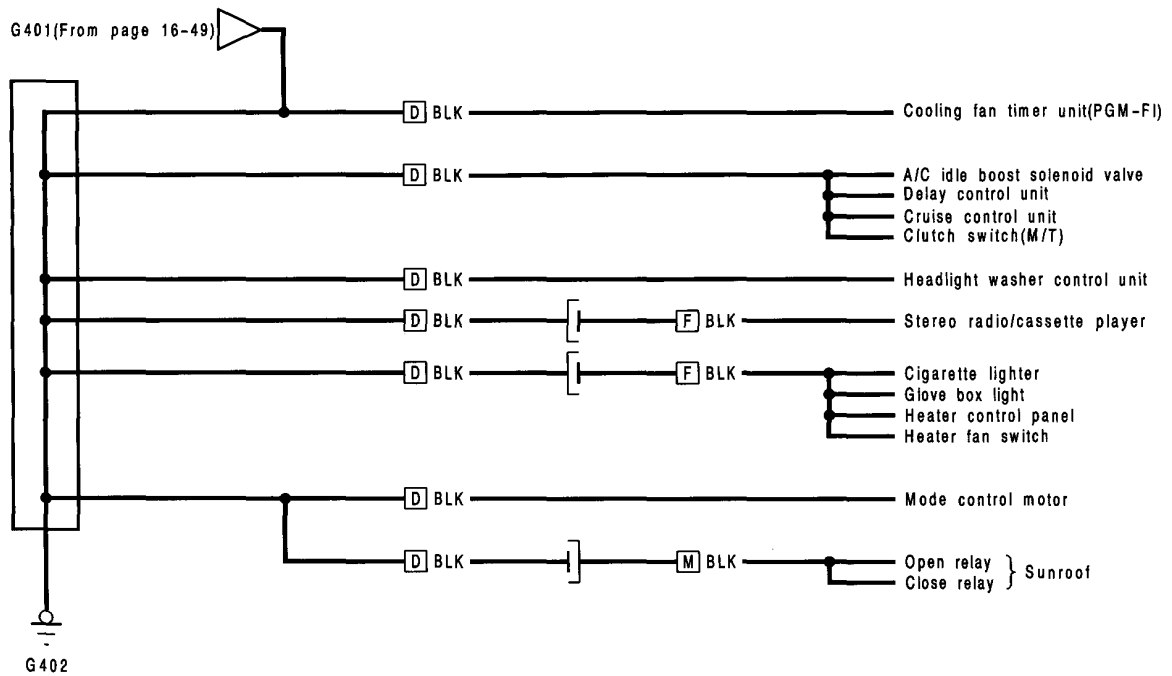
Except europe model:



(D) : Main wire harness
(F) : Dashboard wire harness

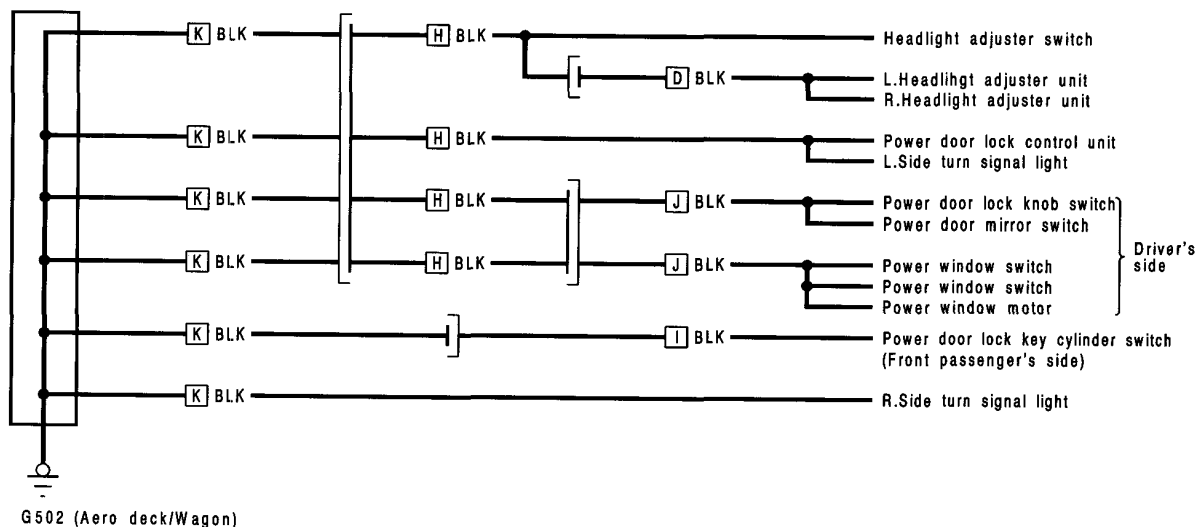
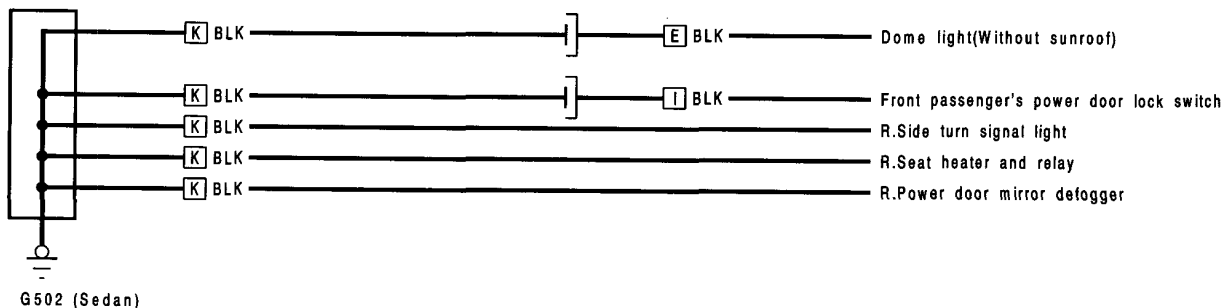
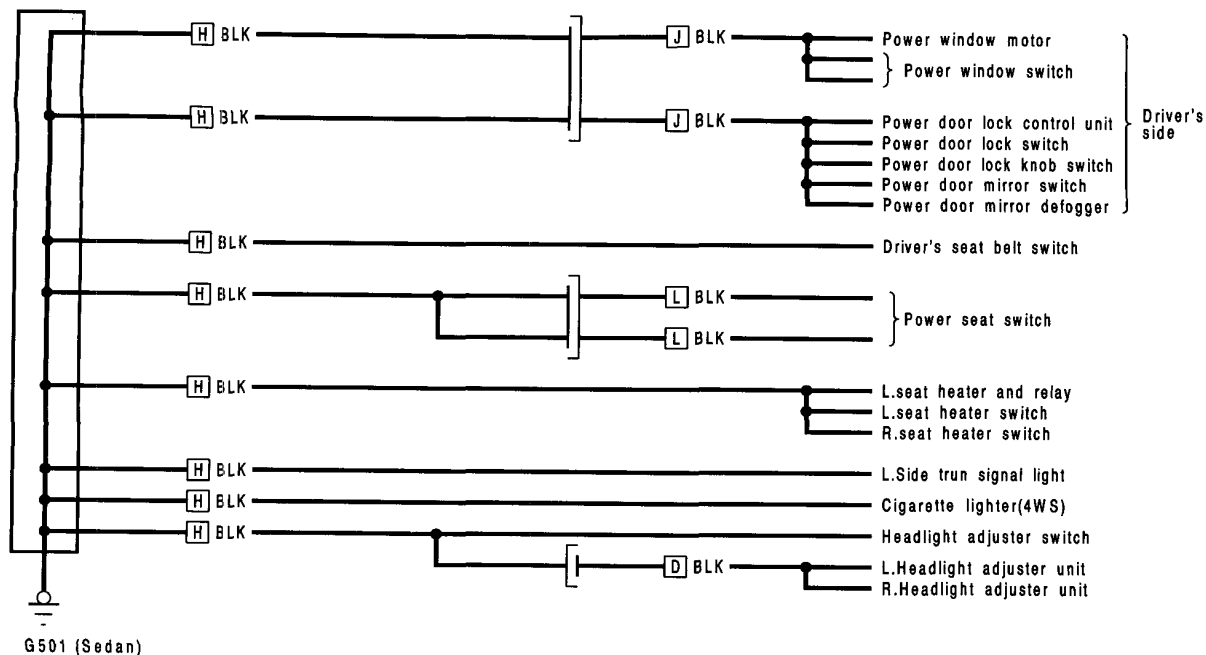


(RHD)



Ground Distribution

Circuit Identification (LHD)



D : Main wire harness
E : Roof wires

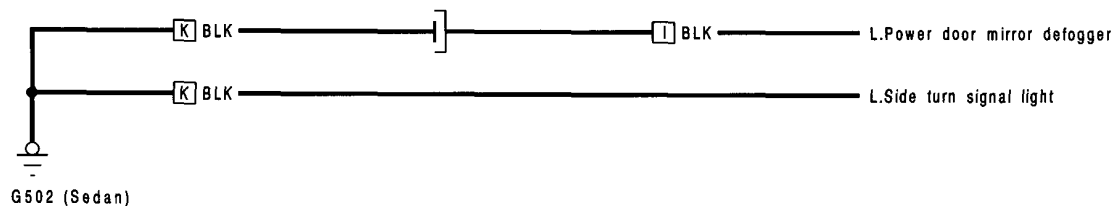
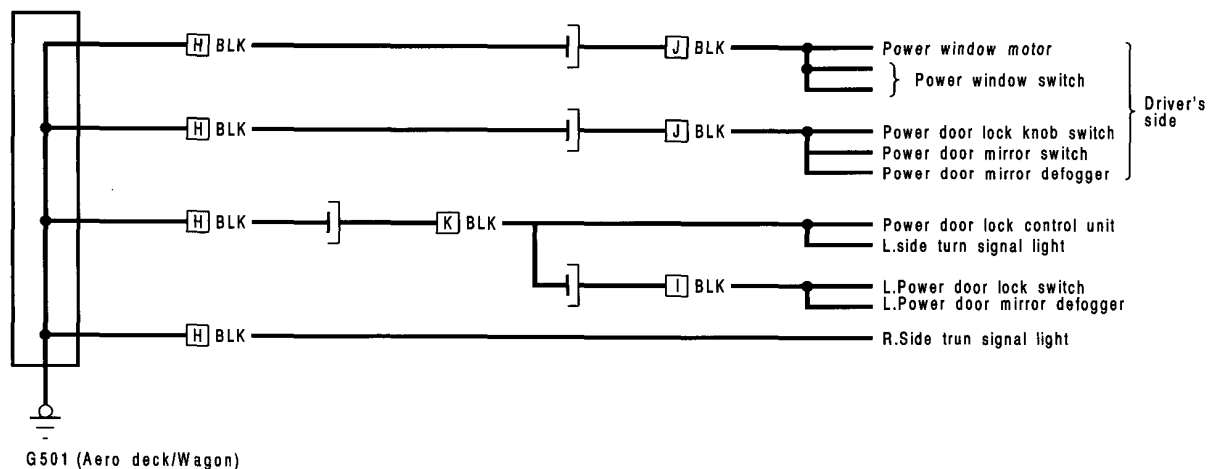
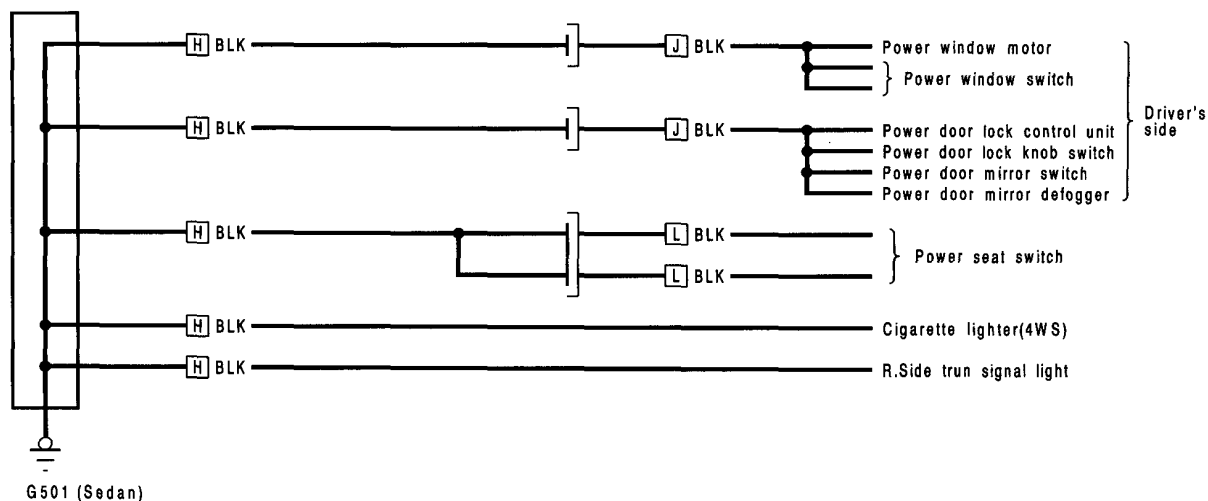
H : Floor wire harness
I : Right front door wire harness

J : Driver door wire harness
K : Side wire harness

L : Power seat wires



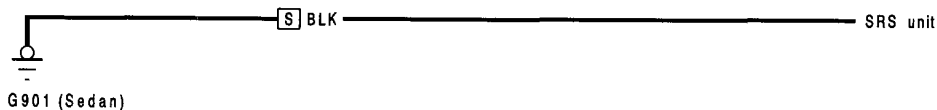
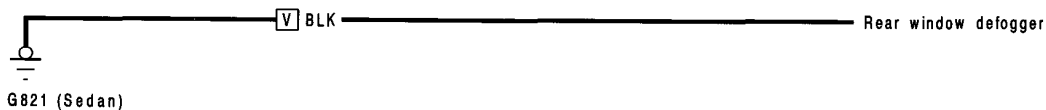
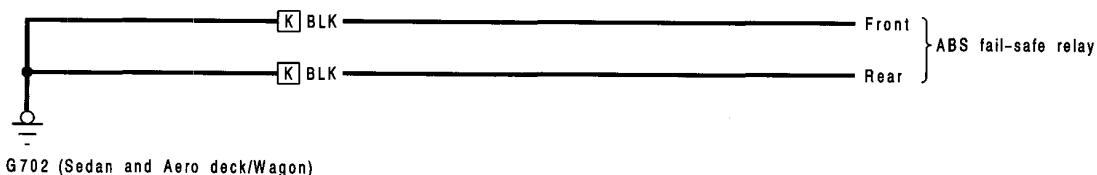
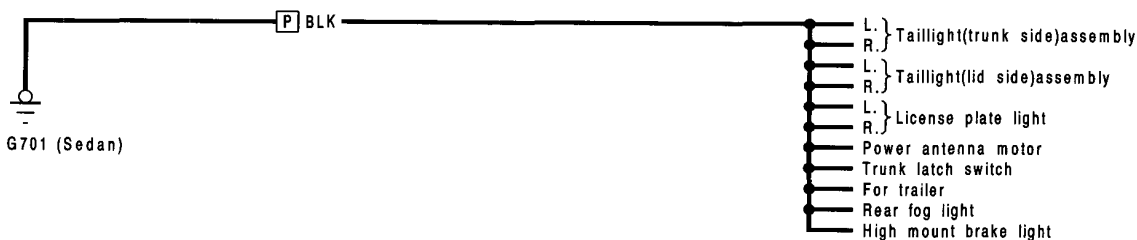
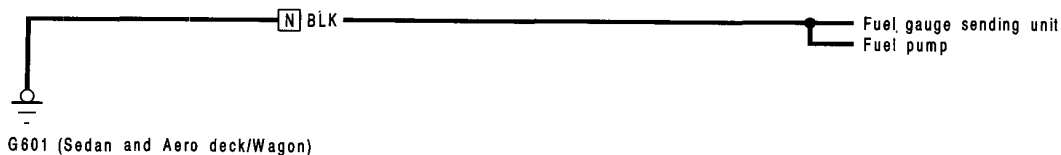
(RHD)



H : Floor wire harness J : Driver door wire harness L : Power seat wires
I : Right front door wire harness K : Side wire harness

Ground Distribution

Circuit Identification (LHD)



[K] : Side wire harness

[N] : Fuel tank wires

[P] : Rear wire harness

[S] : SRS unit sub harness

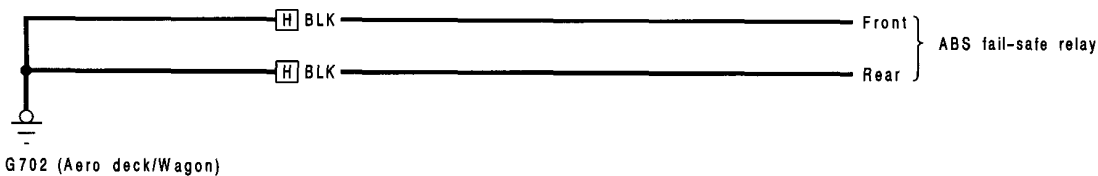
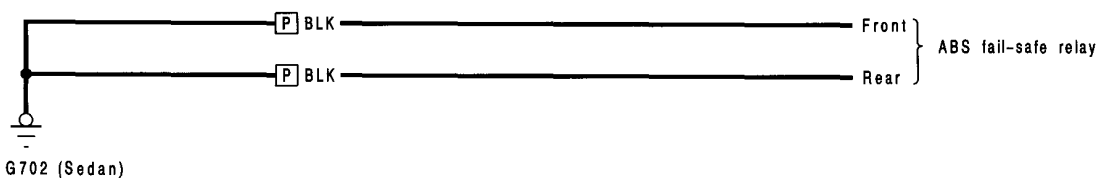
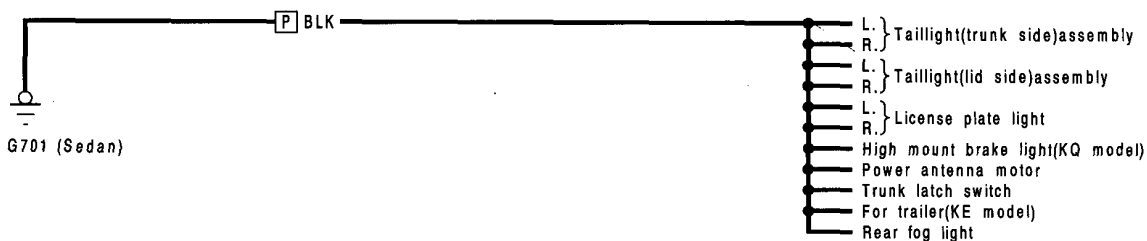
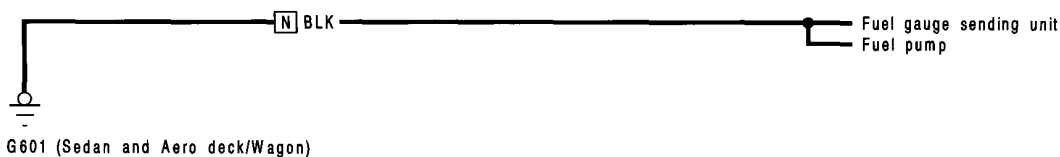
[T] : A/C wire harness

[U] : SRS main harness

[V] : Defogger ground wire



(RHD)



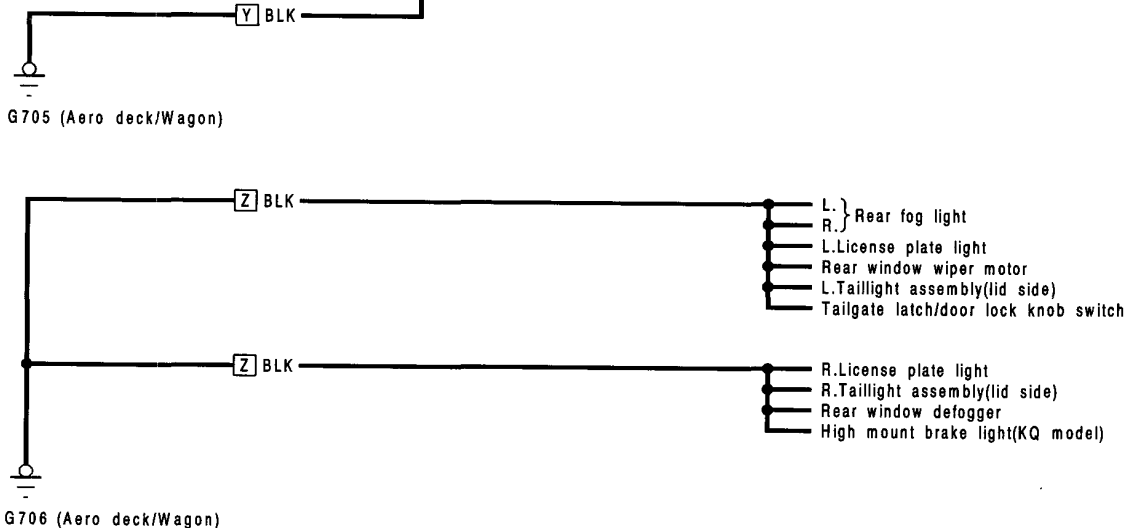
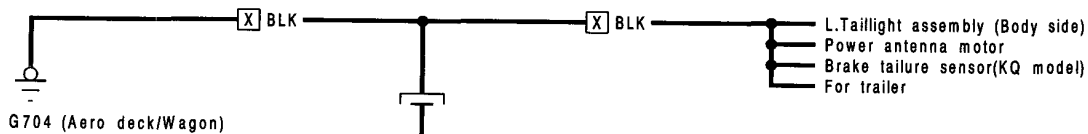
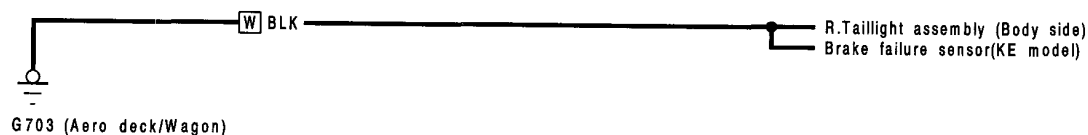
[H] : Floor wire harness
[N] : Fuel tank wires
[P] : Rear wire harness

[S] : SRS unit sub harness
[T] : A/C wire harness

[U] : SRS main harness
[V] : Defogger ground wire

Ground Distribution

Circuit Identification



- W : Right rear wire harness
- X : Left rear wire harness
- Y : Tailhgte wire harness
- Z : Tailhgte sub wire harness